

Canberra is electrifying

Regulation to prevent new fossil fuel gas network connections

What you need to know

The ACT Government has commenced a regulation under the *Climate Change and Greenhouse Gas Reduction Act (2010)* to prevent new fossil fuel gas network connections.

It is part of a plan to power our city with 100% renewable energy and achieve net zero emissions by 2045.

Why is Canberra electrifying?

Powering our homes, businesses, city infrastructure and transport systems with electricity is the best pathway towards phasing out fossil fuel energy. This is because:

- > the ACT is already powered by 100% renewable electricity
- > the technology and skills to support electrification already exist for homes and most businesses.

Preventing new gas connections and building for an all electric future now will reduce emissions and make sure our city is set up for our energy needs. It will also save owners from having to complete costly building and appliance upgrades to electrify in future.



Fossil fuel gas accounts for about **20% of emissions** in the ACT, making it the second largest remaining source of emissions, after transport.

What types of land and premises does the regulation apply to?



Residential zones

There are about 3,000 new fossil fuel gas network connections each year. At least 90% of these are for new homes. Each new home generates approximately 1.3 tonnes of greenhouse gas emissions per annum. Homes account for 51% of the fossil fuel gas demand each year and about 97% of all fossil fuel gas network connections in the ACT. Preventing connections in residential zones will significantly reduce new sources of emissions.



Commercial zones

Small business and large commercial activities account for about 30% of fossil fuel gas demand each year and use gas primarily for space heating, water heating and cooking-these activities can be electrified.



Community facility zones

Services provided in community facility zones could generally be classified as commercial or residential in nature. Buildings in this zone primarily use fossil fuel gas for heating, hot-water heating and cooking, which can all be achieved with electric technologies.



Residential buildings (Class 1-4 buildings)

All residential buildings (Class 1-4 buildings, as classified under the National Construction Code) are also included in the regulation. This will ensure that all residential buildings in non-residential zones are captured by the regulation (such as caretaker buildings in industrial zones).

Land designated as 'National Land' is not subject to the ACT Planning system and is managed by the National Capital Authority. It includes areas such as the Parliamentary Triangle, Lake Burley Griffin and some diplomatic missions.

To find out about what rules apply in National Land, contact the [National Capital Authority](#).

Don't know what land-use zone applies to your block?

Find out on the Planning [website](#)



Where will connections be allowed?

No impact to existing connections

The regulation only applies to new connections. This means homes and businesses with an existing connection or existing gas meter can continue using gas.

Industrial zones

Many businesses in industrial land use zones rely on gas for a range of specialised commercial activities that cannot easily be electrified (e.g. manufacturing, asphalt production, commercial laundries, glass and steelworks). For this reason it is important for connections to be allowed to continue in industrial zones.

The restriction on connection to residential buildings (Class 1-4) still applies in industrial zoned land. This is because residential buildings are sometimes built in industrial zones (i.e. caretaker cottages), and efficient electric alternatives for residential purposes are readily available.

Other zones

Other land use zones such as parks and recreational, transport and services and non-urban zones will be considered for inclusion in the regulation as part of future reviews, currently scheduled for 2026 and 2030.

What about renovations and knockdown/rebuilds?

The regulation will apply to extensive renovation and construction projects, including knockdown rebuilds, where a gas connection has been abolished to make a site safe for construction activities.

Homes and businesses with gas already installed will be able to keep using their connection.

You should speak to your builder for further guidance on how this regulation may impact your construction project.

Can a meter be relocated?

This will depend on the needs of your construction project. If the gas service needs to be abolished (e.g. to ensure safety during construction) you will be unable to re-establish a connection as it will be classed as a new connection. You should discuss this with your building professionals and Evoenergy before proceeding.

Exemption process

Exemptions to the regulation can be granted in limited circumstances, including where:

- > there are no feasible alternatives to fossil fuel gas use
- > businesses are unable to establish in building with an existing connection or an exempt zone (e.g. an industrial zone).

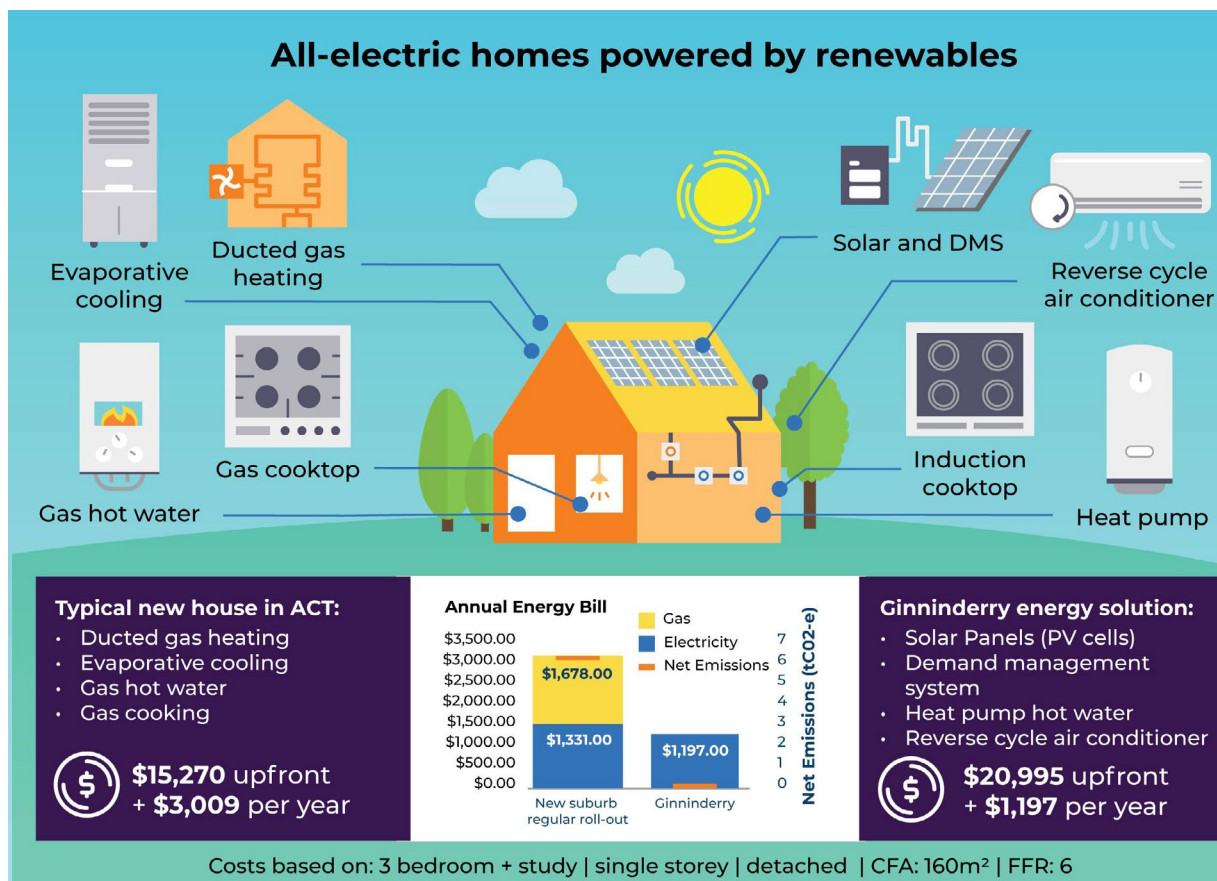
Allowing exemptions helps government to balance broader community benefits, against network and environmental impacts, that may arise in individual circumstances.

Exemptions are not available to residential blocks or the Molonglo Commercial Centre.

How will all-electric buildings benefit Canberrans?

All electric buildings will save you money

We know that an average household of four people could save over \$2,500 a year in energy bills if they were all electric. Independent research from Ginninderry also shows that an all-electric home in Canberra would save about \$9,000 over 10 years.



Support for electrification:

Everyday Climate Choices programs

The ACT Government already has a variety of support available to help Canberra households and businesses to electrify including no interest loans for sustainable upgrades, rebates for low-income households and small-medium business, and free advice. For more information, visit climatechoices.act.gov.au

Make your next choice electric

The ACT Government have collaborated with Australia's leading consumer advocacy group, CHOICE, on an [online tool](#) to help Canberrans choose electric appliances and transition off gas.

Taking about 10 minutes, the new tool showcases electric appliances available on the market, provides cost estimates for upgrades and tells you how much you could save.

More information

To find out more about the regulation, including applying for an exemption, visit climatechoices.act.gov.au

You can also get in touch with us by emailing gastransition@act.gov.au or calling 13 22 81.