

What's in your waste-free lunchbox?

Everyday
**climate
choices**

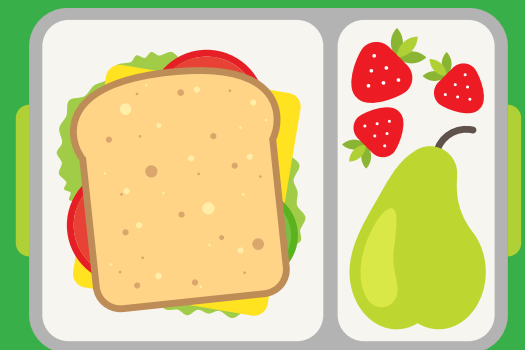


**It's easy
to pack a
nutritious
lunch with no
throw-away
packaging!**

Wrap your sandwich
in washable beeswax
wrap, fabric or a
paper bag



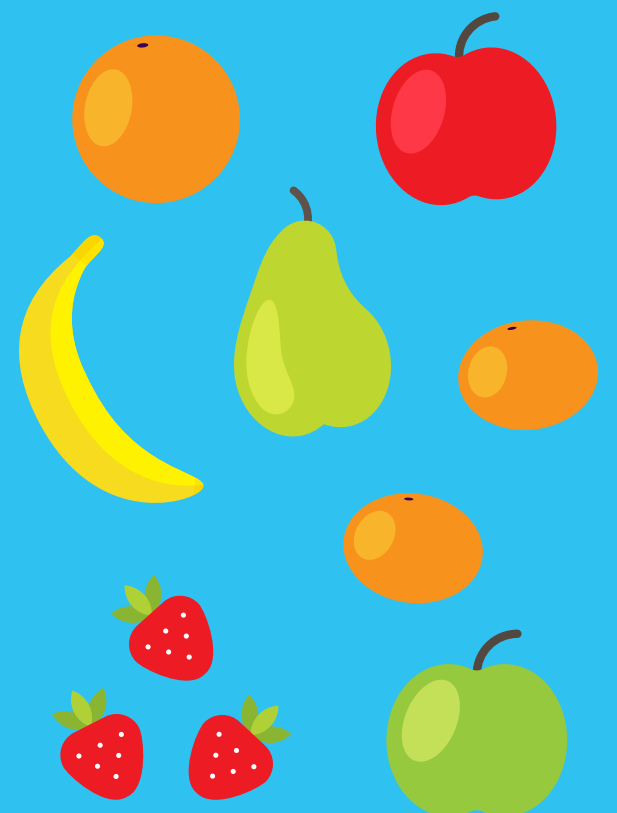
Choose a compartment
lunch box or small
reusable containers



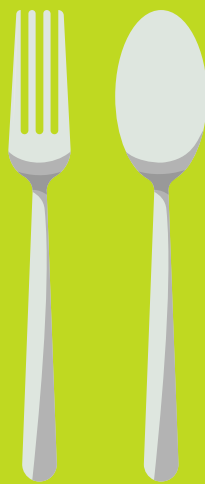
Steel or aluminium
cans, juice boxes and
yoghurt containers
can be recycled



Choose fruit
'wrapped' in natural
skin. Food scraps can
be composted



Bring a fork
or spoon
from home



Pack a reusable drink
bottle, flask or ice pack



ACT
Government

Sustainable Schools Program

Small Steps. Smart Choices.

climatechoices.act.gov.au/schools-program